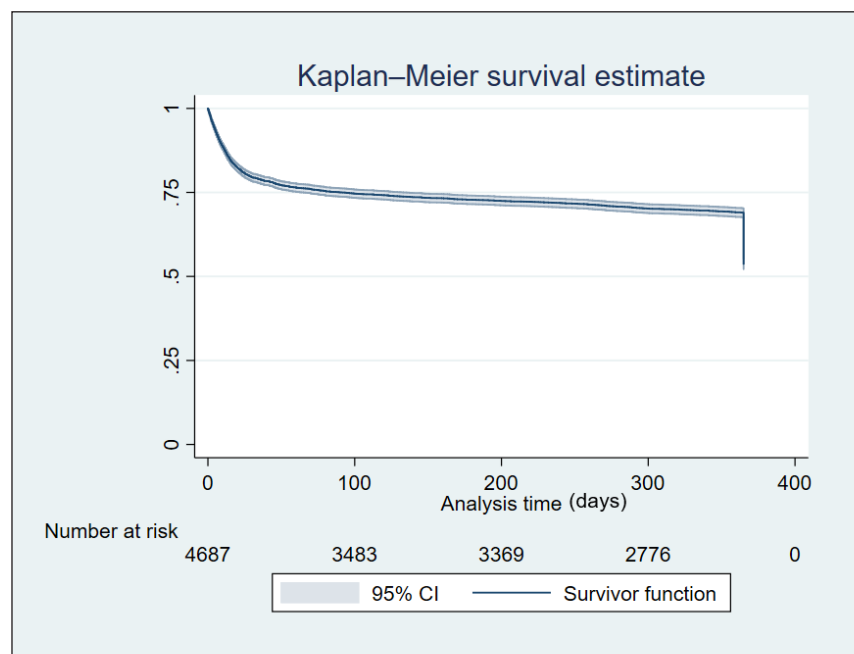


Long-term survival and factors associated with mortality in patients with Community-Acquired Pneumonia and COVID-19: A retrospective cohort study

Eduardo Tuta-Quintero¹, Camila Martínez-Ayala², Alirio Bastidas-Goyes^{3,*}, Diana Díaz Quijano⁴, Ivan Guerrero⁵, Sergio Román⁶, Nicolás Peña⁷, Luisa Martínez⁸, María Celedón⁹, Maddy Perdomo-Parra¹⁰



Supplementary Figure 1. General survival

1 Residente de Medicina Interna, Universidad de La Sabana. Chía, Colombia. <https://orcid.org/0000-0002-7243-2238>
 2 School of Medicine, Universidad de La Sabana. Chía, Colombia. <https://orcid.org/0000-0001-8275-4399>
 3 School of Medicine, Universidad de La Sabana. Chía, Colombia. <https://orcid.org/0000-0002-8873-9779>
 4 School of Medicine, Universidad de La Sabana. Chía, Colombia. <https://orcid.org/0000-0001-8804-0274>
 5 School of Medicine, Universidad de La Sabana. Chía, Colombia. <https://orcid.org/0000-0003-1547-2628>
 6 School of Medicine, Universidad de La Sabana. Chía, Colombia. <https://orcid.org/0000-0002-9564-7063>
 7 School of Medicine, Universidad de La Sabana. Chía, Colombia. <https://orcid.org/0009-0007-9365-1898>
 8 School of Medicine, Universidad de La Sabana. Chía, Colombia. <https://orcid.org/0000-0003-2736-3285>

9 School of Medicine, Universidad de La Sabana. Chía, Colombia. <https://orcid.org/0000-0003-2914-3809>
 10 School of Medicine, Universidad de La Sabana. Chía, Colombia. <https://orcid.org/0000-0001-8331-0108>
 * Autor para correspondencia:
 Correo electrónico: alirio.bastidas@unisabana.edu.co

Recibido: 01/10/2024; Aceptado: 15/12/2024

Cómo citar este artículo: E. Tuta-Quintero, *et al.* Long-term Survival and Factors Associated with Mortality in Patients with Community-Acquired Pneumonia and COVID-19: A Retrospective Cohort Study. Material Suplementario. *Infectio* 2025; 29(2): 1

Supplementary table 1. Arterial blood gases and laboratory test

	Total population n=4697	CAP n=2464	COVID-19 n=1528	No CAP/COVID-19 n=705	P value
pH, m(SD)	7.4 (0.08)	7.4 (0.08)	7.4 (0.07)	7.4 (0.07)	<0.001
PaO ₂ , m(SD)	63.5 (17.4)	62.7 (19.18)	63.8 (14.75)	65 (18.24)	<0.001
PaCO ₂ , m(SD)	32.5 (7.79)	33.5 (8.68)	31.5 (6.2)	32.5 (8.7)	<0.001
HCO ₃ , m(SD)	21.7 (4.15)	21.3 (4.58)	21.9 (3.6)	22.1 (4.16)	<0.001
BE, m(SD)	-1.6 (4.02)	-2.2 (4.53)	-1.3 (3.55)	-1.3 (3.98)	<0.001
Lactate, m(SD)	1.9 (1.44)	2.1 (1.62)	1.7 (1.25)	1.6 (1.28)	<0.001
SpO ₂ , m(SD)	89.5 (9.21)	88.5 (8.38)	90.1 (10.11)	90.1 (7.79)	<0.001
FiO ₂ %, mean (SD)	32.7 (20.05)	31.5 (16.14)	34.9 (23.96)	29.9 (17.38)	<0.001
PaO ₂ /FiO ₂ , m(SD)	244.9 (90.2)	225.5 (77.07)	261.1 (101.36)	259.3 (82.31)	<0.001
White cells count cell x 10 ³ , m(SD)	11257.2 (7844.42)	12618.6 (7070.96)	9436.9 (9381.93)	10453.5 (5288.84)	<0.001
Hemoglobin g/dL, m(SD)	13.6 (2.57)	13.1 (2.59)	14.3 (2.38)	13.8 (2.55)	<0.001
Hematocrit %, m(SD)	40.6 (7.12)	39.2 (7.22)	42.6 (6.47)	41 (7)	<0.001
Platelets microliters, m(SD)	253153.8 (107007.85)	261112.6 (110617.32)	241052.4 (101175.18)	251933.7 (104092.17)	<0.001
Sodium meq/L, m(SD)	137.4 (6.79)	137.7 (7.54)	137 (5.16)	137.6 (7.43)	0.013
Glucose mg/dL, m(SD)	143 (77.2)	138.3 (69.07)	152.4 (89.12)	135.4 (67.91)	<0.001
Albumin mg/dL, m(SD)	3 (1.07)	3 (1.3)	3 (0.6)	2.9 (0.67)	0.318
Creatinine mg/dL, m(SD)	1.4 (2.45)	1.4 (2.85)	1.5 (2.07)	1.4 (1.69)	<0.001
BUN mg/dL, m(SD)	24.8 (18.48)	26.5 (19.49)	22.6 (15.9)	24.6 (20.5)	<0.001

Note: SD: Standard deviation; PaO₂: Partial pressure of oxygen; PaCO₂: Partial Pressure of Carbon Dioxide; HCO₃: Bicarbonate; BE: Base excess; SpO₂: Peripheral oxygen saturation; FiO₂: Fraction of inspiratory oxygen concentration; PaO₂/FiO₂: The ratio of partial pressure of oxygen in arterial blood to the fraction of inspiratory oxygen concentration; BUN: Blood urea nitrogen